

Set-up and Configuration for the SAR103 Globespan USB ADSL Modem

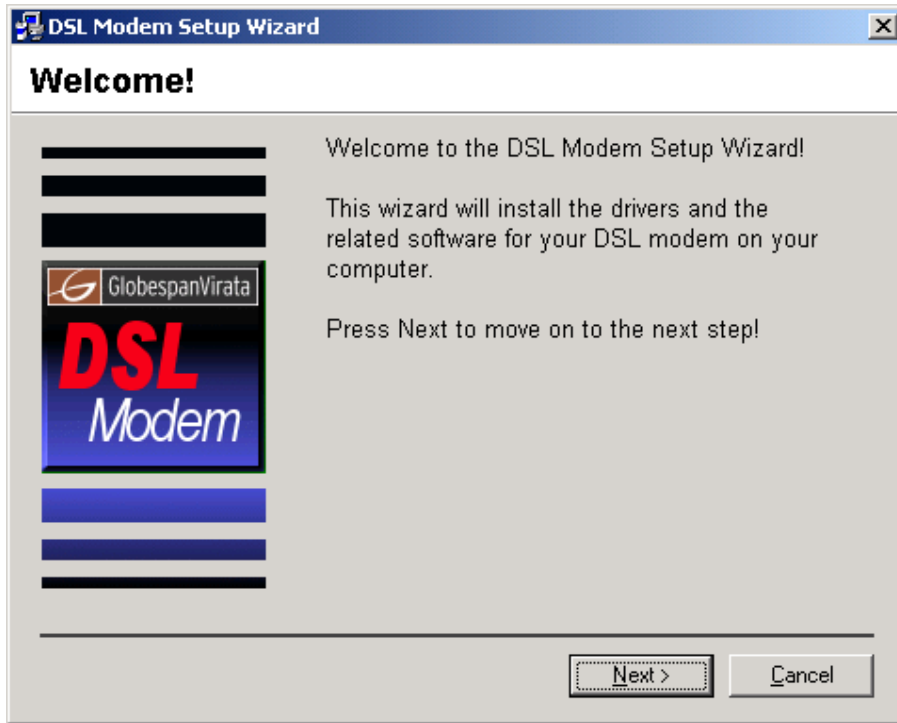
**First of all:
DON'T CONNECT THE MODEM TO
YOUR PC YET!**



These drivers are suitable for Windows 95, 98, Me, W2K and XP.

Insert the Drivers CD into your CD drive.

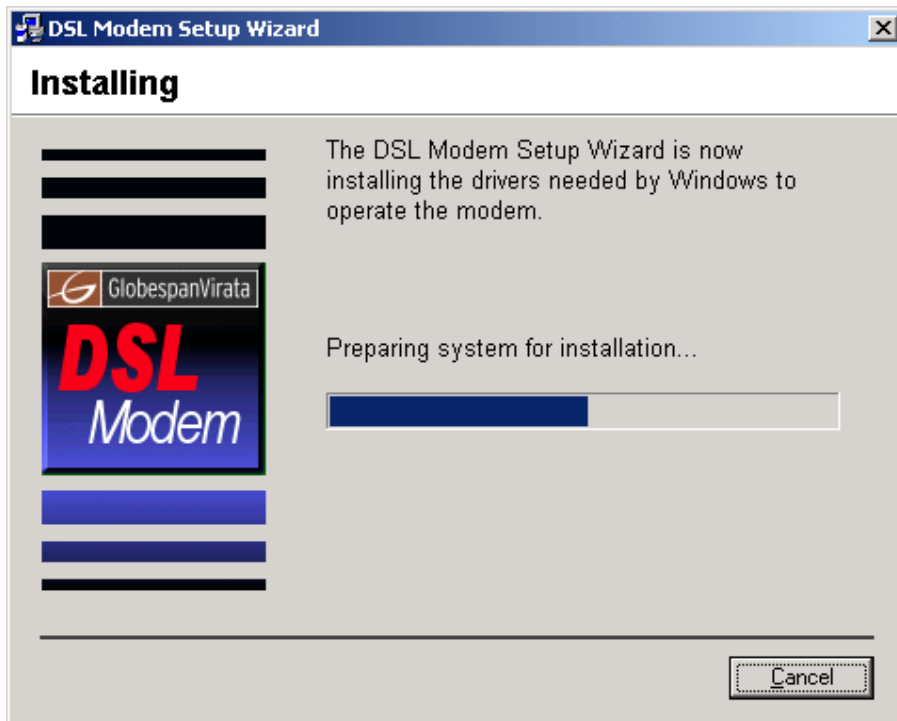
Normally the CD will autorun but if it doesn't just manually run the setup.exe programme.



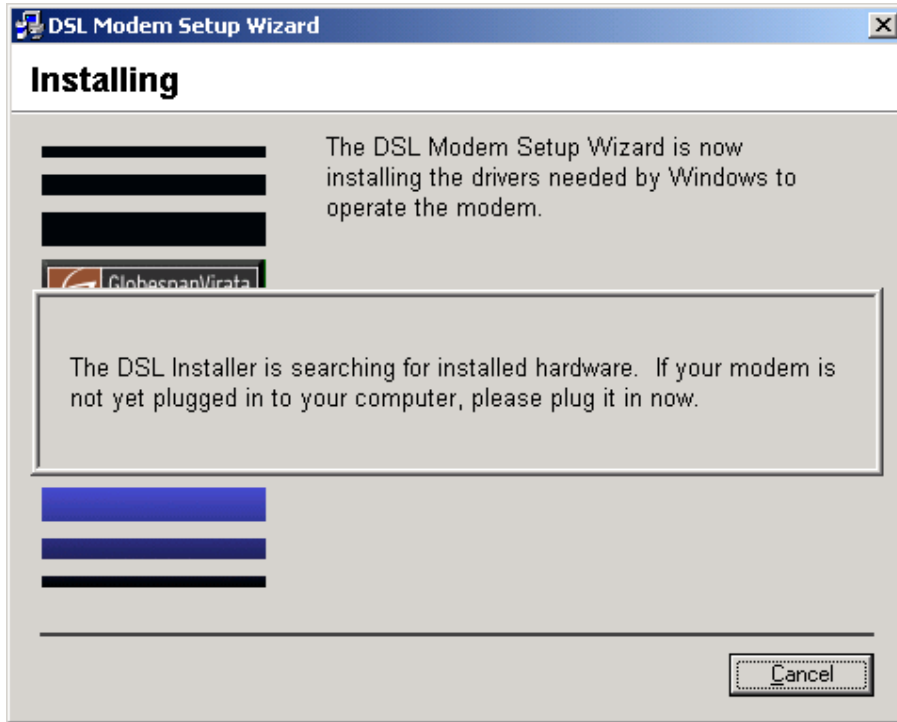
Click on Next.

Click on Accept for the licence agreement page.

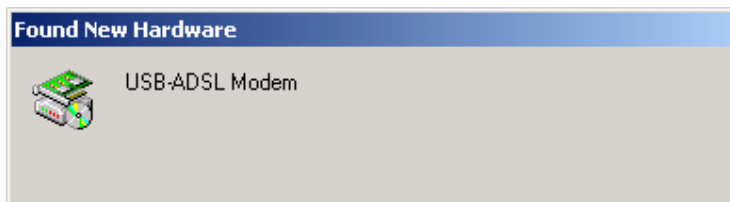
Then, on the 'Select Service Provider' screen, select the PPPoA driver.



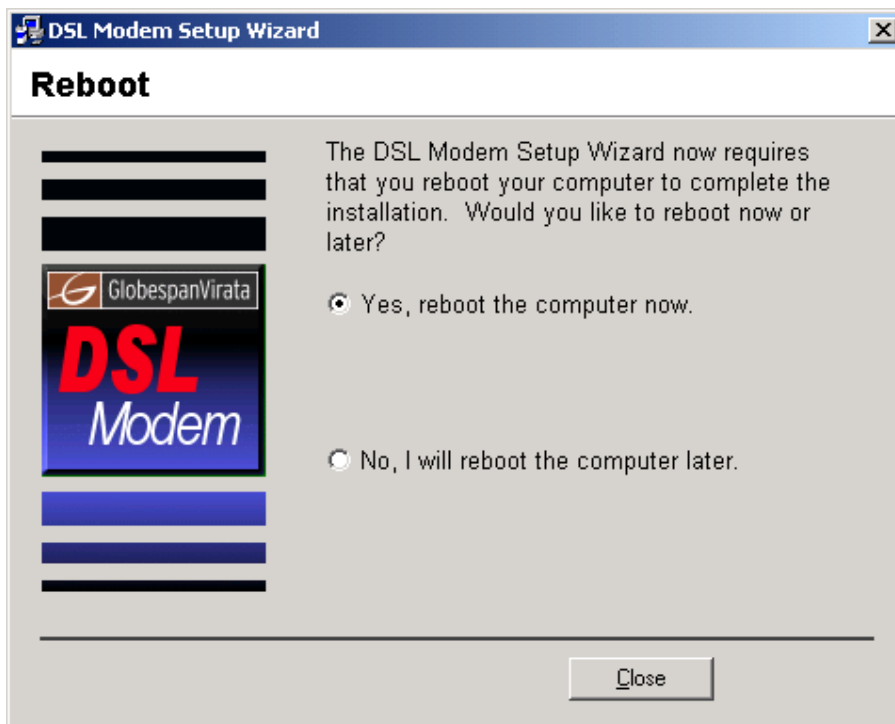
Wait until the drivers are installed



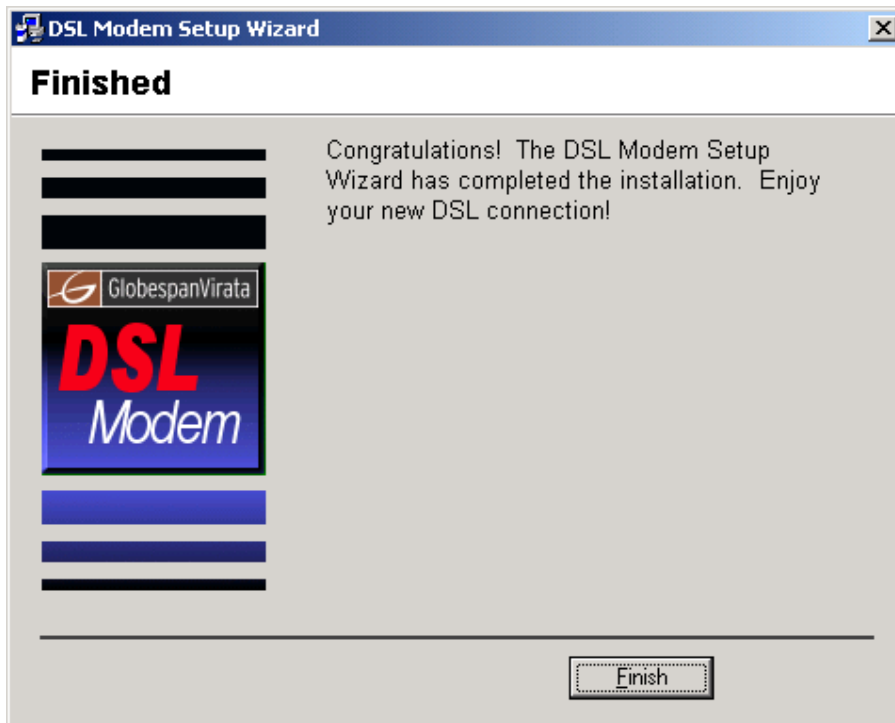
Then when instructed, connect the modem to the USB port of your PC.



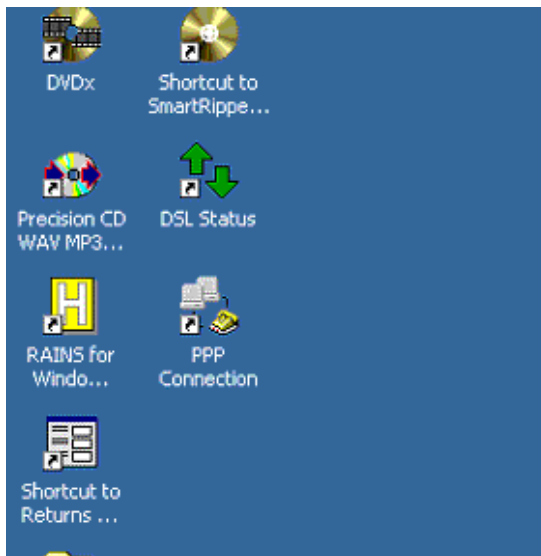
The drivers should then install.



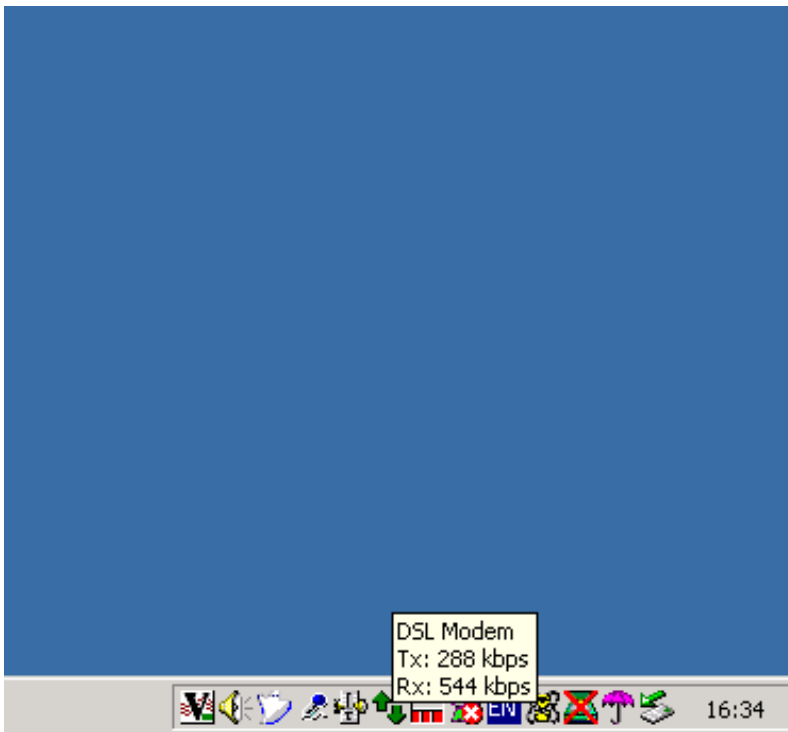
Now you need to reboot....



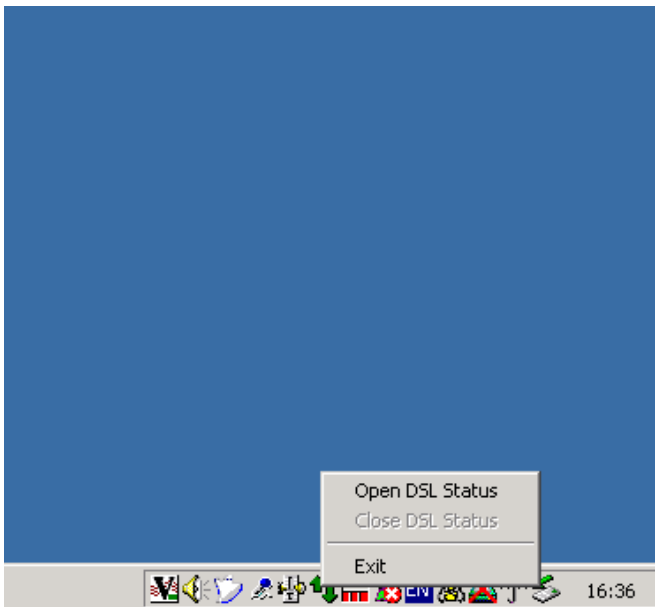
After rebooting the final part of the driver installation is completed...



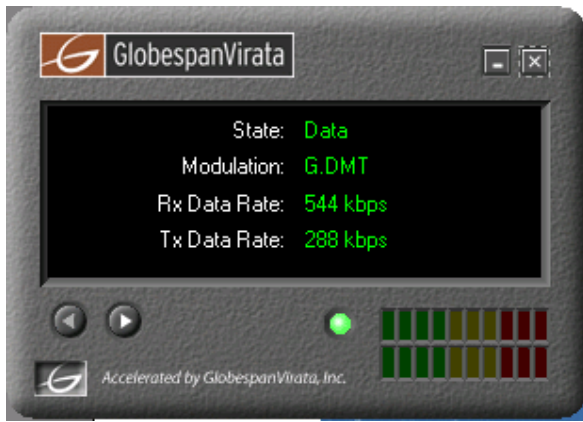
You should now have two new icons on your desktop: One is for showing the status of your ADSL line. The second is a shortcut to a new dial-up connectoid.



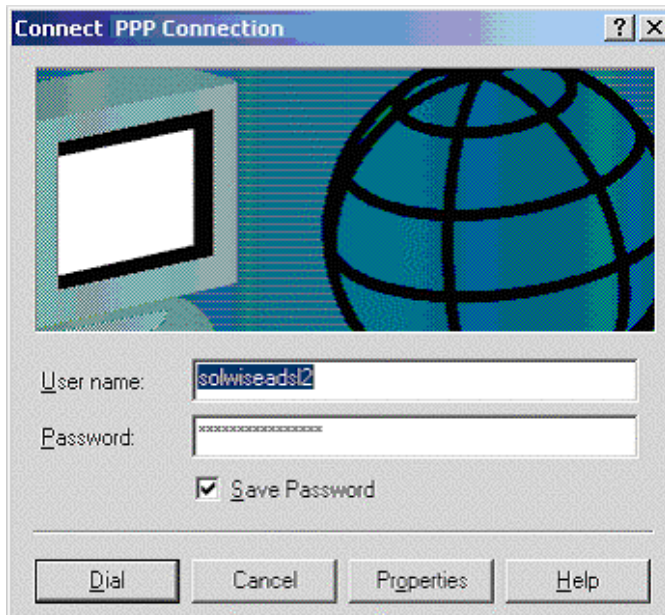
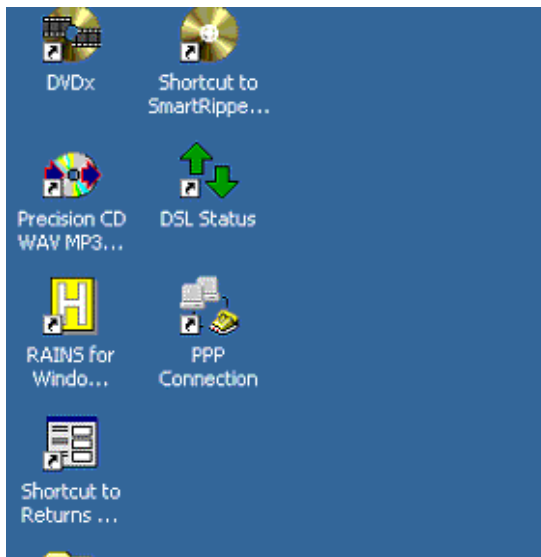
Also.... on the system tray you should have a new icon of up and down arrows. If these arrows are red then this means the USB modem is not connected. Yellow means the modem is synching with the line. Green (as above) means it's correctly connected to the line.



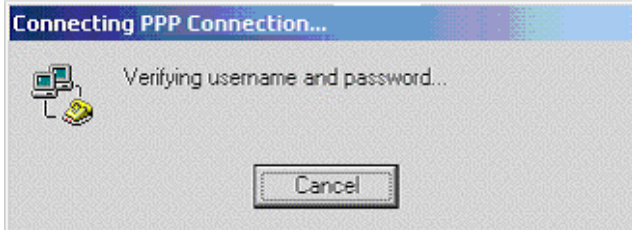
If you select DSL Status by clicking on the system tray or desktop icon then the following line status window is displayed.



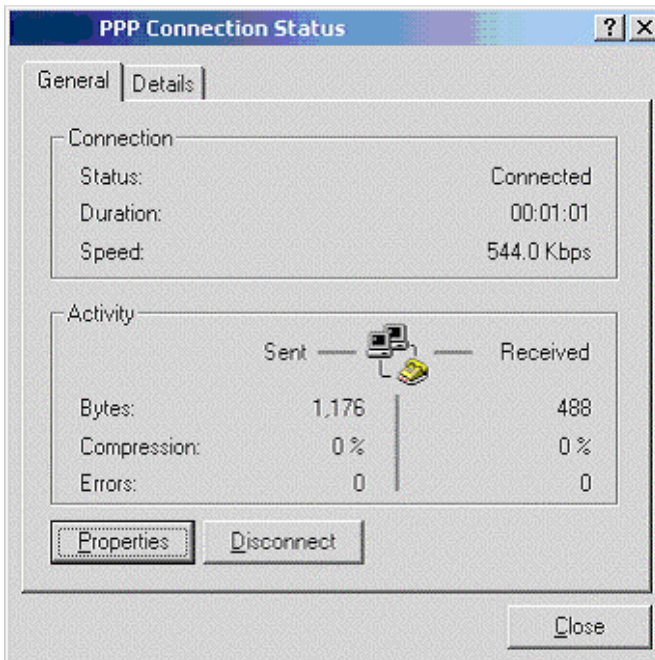
To connect to the internet double click on the PPP Connection short cut on your desktop...



Now enter the login user name and password for your ISP account and then click on Dial.



You should see a screen indicating that your username and password are being verified and then you should be successfully connected....



You are now connected to the internet!